

Cyclone.

AC 500 - 2000

Function:

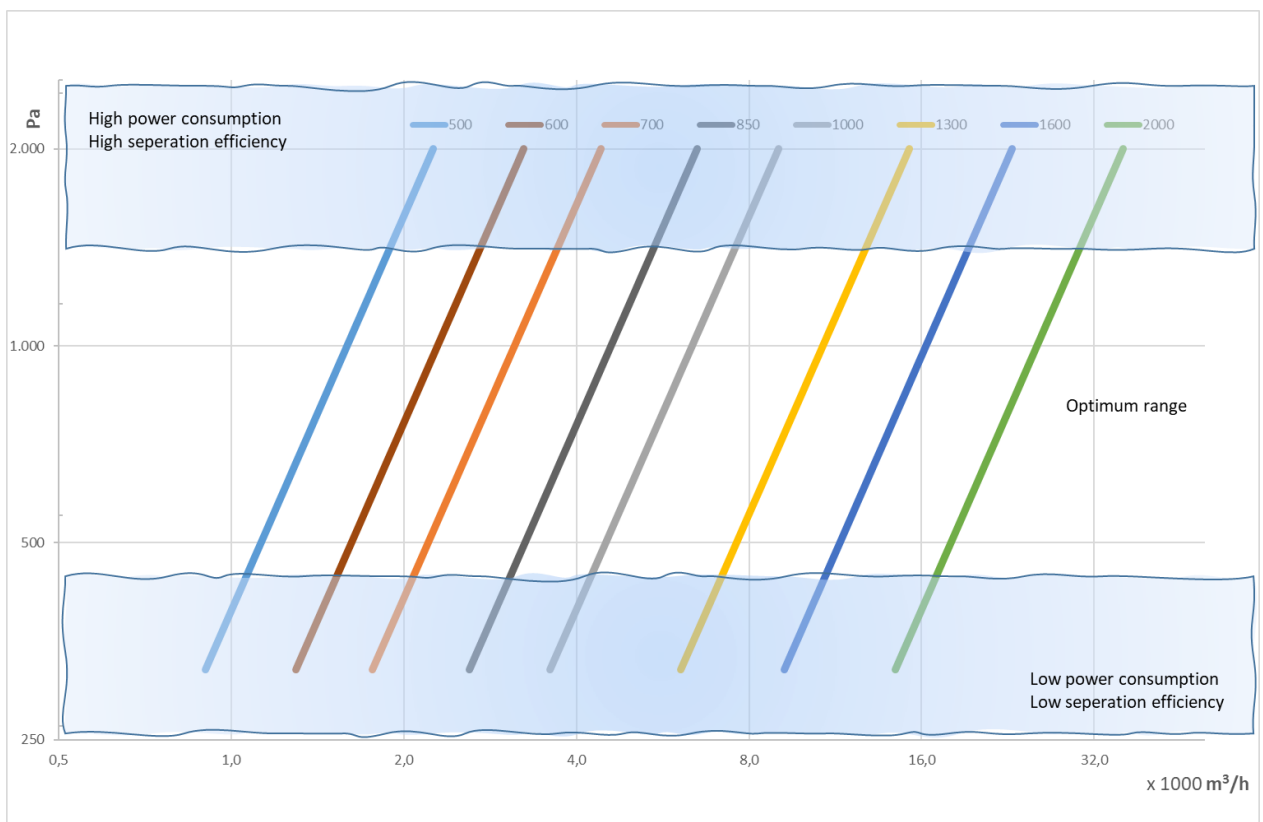
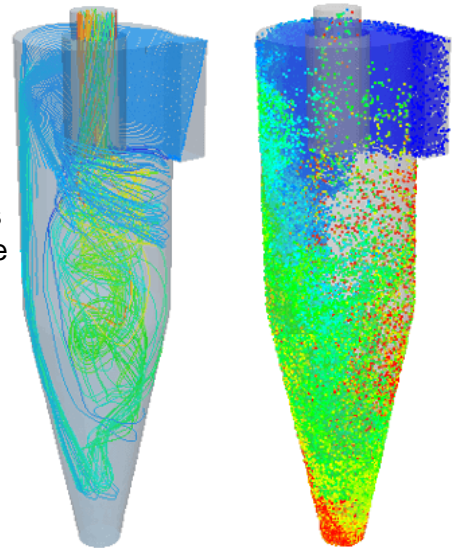
The dirty air is fed into the cylindrical upper, causing the air to rotate. The material is forced out towards the periphery of the cyclone under the influence of the centrifugal force and is passed out through the hole at the bottom. The purified air leaves the cyclone through the centrally placed outlet pipe at the top.

The separation capacity increases with the feed rate, but so does the pressure loss and thus the energy consumption. It is therefore a question of finding a good compromise.

Aagaard has developed a series of cyclones optimized for filtration of light and large quantities of material. It is thus particularly suitable for the wood/paper/recycling and grain/feed industries.

Below, the right size cyclone can be selected based on air flow and a typical pressure drop in the vicinity of 1000 Pa.

Operational pressure +/- 5000 Pa.



HIGH-END DUST HANDLING SOLUTIONS & SURFACE TREATMENT

FILTERS - FANS - DUCTING - SILOS - OUTFEEDERS - CONVEYERS - TRUCKLOADERS - CYCLONES - FINISHING LINES

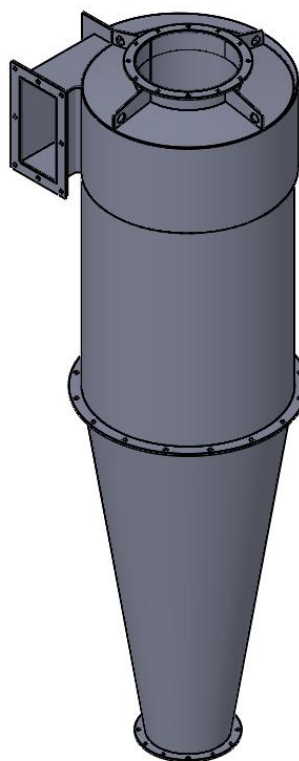
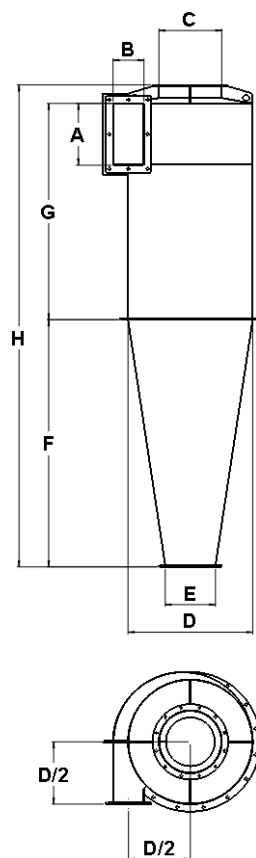
Cyclone

AC 500 - 2000

Technical data:

Constructed with tangential inlet on the right or left side relative to the output axis.

Left shown



Type	A	B	C	D	E	F	G	H	Weight[kg]	Item No.
AC 500	250	125	250	500	200	1000	875	1950	65	208A0500
AC 600	300	150	300	600	250	1200	1050	2350	90	208A0600
AC 700	350	175	350	700	275	1400	1225	2725	120	208A0700
AC 850	425	212	450	850	350	1700	1490	3300	160	208A0850
AC 1000	500	250	500	1000	400	2000	1750	3875	235	208A1000
AC 1300	650	325	650	1300	500	2600	2275	5025	550	208A1300
AC 1600	800	400	800	1600	650	3200	2800	6175	815	208A1600
AC 2000	1000	500	1000	2000	800	4000	3500	7695	1240	208A2000

AC 500 - 2000

Technical data:

The collection efficiency is listed below in relation to the particle size.

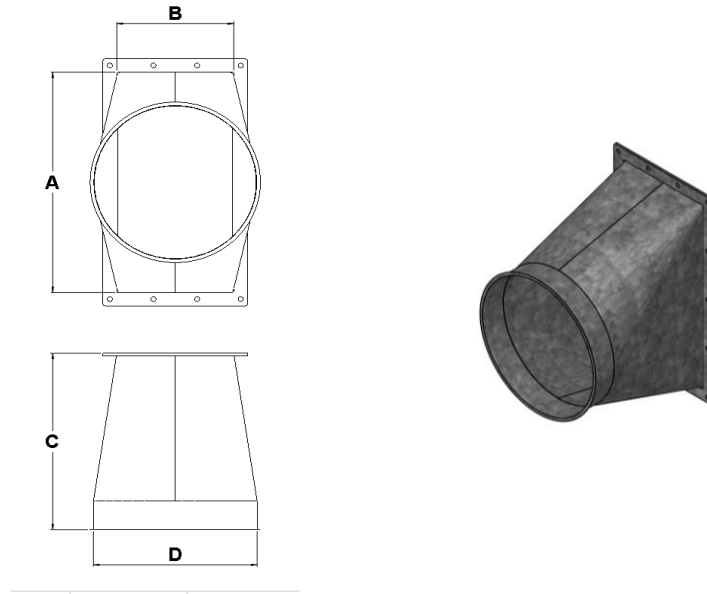
This is the theoretical value of a material density of 100kg/m³ and 10m/s in feed speed.



Options

Cyclone inlet

Symmetrical transition-piece from 0.75-0.9mm. galvanized sheetmetal with edge for clamps.



Type	A	B	C	D	Item No.
Inlet Cyklone AC 500	250	125	400	ø125-ø180	224A0500
Inlet Cyklone AC 600	300	150	400	ø140-ø200	224A0600
Inlet Cyklone AC 700	350	175	400	ø180-ø250	224A0700
Inlet Cyklone AC 850	425	212	400	ø200-ø300	224A0850
Inlet Cyklone AC1000	500	250	400	ø250-ø350	224A1000
Inlet Cyklone AC1300	650	325	400	ø315-ø450	224A1300
Inlet Cyklone AC1600	800	400	400	ø400-ø500	224A1600
Inlet Cyklone AC2000	1000	500	400	ø500-ø700	224A2000

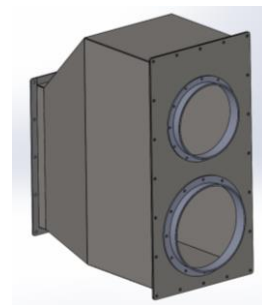
Other inlet solutions

e.g.

blind-plate with sprout

Inlet box with none-return flap

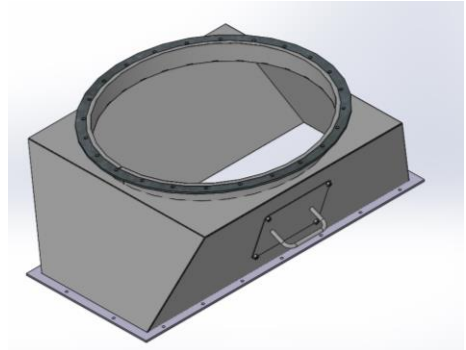
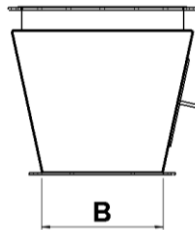
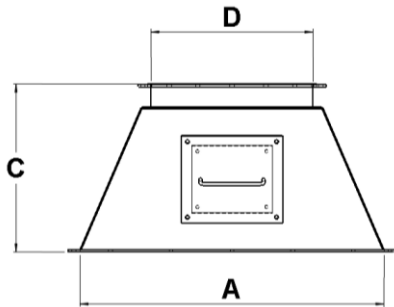
Offer on request



Options

Transition piece for rotary valve

Made from 2mm painted sheetmetal with removable hatch.

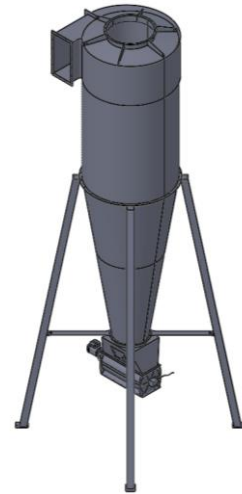
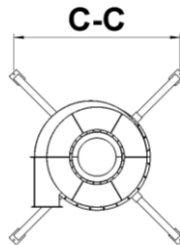
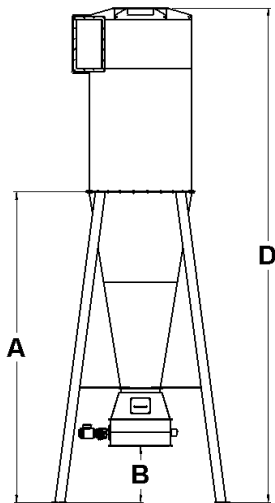


Type	A	B	C	D	Weight[kg]	Item No.
Transition AC 500-ABS 250	250	300	413	ø200	15	224A0501
Transition AC 500-ABS 400	400	300	413	ø200	18	224A0502
Transition AC 600-ABS 250	250	300	413	ø250	18	224A0601
Transition AC 600-ABS 400	400	300	413	ø250	19	224A0602
Transition AC 700-ABS 400	400	300	413	ø275	20	224A0702
Transition AC 700-ABS 750	750	300	413	ø275	24	224A0703
Transition AC 850-ABS 400	400	300	413	ø350	24	224A0852
Transition AC 850-ABS 750	750	300	413	ø350	25	224A0853
Transition AC1000-ABS 400	400	300	413	ø400	25	224A1002
Transition AC1000-ABS 750	750	300	413	ø400	28	224A1003
Transition AC1000-ABS1000	1000	300	413	ø400	30	224A1004
Transition AC1300-ABS 750	750	300	413	ø500	31	224A1303
Transition AC1300-ABS1000	1000	300	413	ø500	33	224A1304
Transition AC1600-ABS 750	750	300	569	ø650	35	224A1603
Transition AC1600-ABS1000	1000	300	569	ø650	38	224A1604
Transition AC1600-ABS1000 CAN	1000	450	413	ø650	37	224A1605
Transition AC2000-ABS1000 CAN	1000	450	413	ø800	43	224A2005

Options

Legs

Made from painted square steel profiles.



Type	A	B	C-C	D	Weight[kg]	Item No.
Legs f. AC 500	2513	750	1110	3463	45	208A0501
Legs f. AC 600	2713	750	1237	3863	60	208A0601
Legs f. AC 700	2913	750	1379	4238	75	208A0701
Legs f. AC 850	3213	750	1591	4813	100	208A0851
Legs f. AC1000	3507	750	1782	5388	125	208A1001
Legs f. AC1300	4107	750	2156	6538	165	208A1301
Legs f. AC1600	4863	750	2574	7688	275	208A1601
Legs f. AC2000	5507	750	3076	9210	400	208A2001

Outlet piece

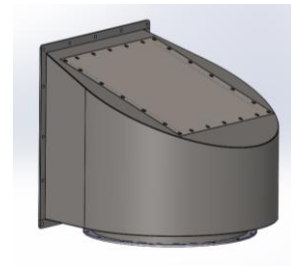
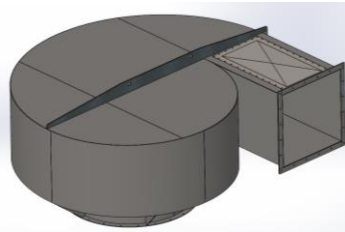
Made from 2mm painted sheetmetal.

E.g.

Tangential outlet with/without explosion panel

Square outlet with/without explosion panel

Offer on request.

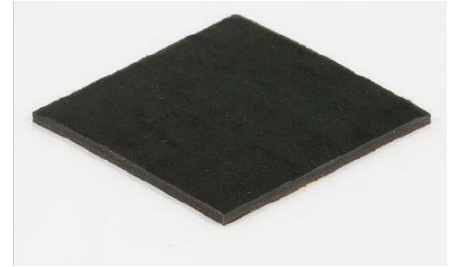


Options

Soundproofing

Adhesive insulation material 7.5kg/m²

Made of EVA-based rubber suitable for wind and weather.



Type	Weight[kg]	Item No.
Soundprof. f. AC 500	24	170550-21
Soundprof. f. AC 600	34	170600-21
Soundprof. f. AC 700	45	170700-21
Soundprof. f. AC 850	67	170850-21
Soundprof. f. AC1000	92	171000-21
Soundprof. f. AC1300	155	171300-21
Soundprof. f. AC1600	230	171600-21
Soundprof. f. AC2000	368	172000-21

